

## *Journey's End Resort Dive Information*

Journey's End Resort takes pride in being home to one of Belize's only PADI 5-Star Gold Palm facilities. We are sophisticated enough for the most advanced diver yet understanding and patient with beginners. We are lucky to be situated right on top of one of the greatest dive spots in the world. It is only about a ¼ mile out to the second largest barrier reef in the world. And because Journey's End is located north of San Pedro, we have the advantage of diving most of the less-visited sites. You'll rarely see another dive boat in the area and most sites are only a few minutes from the dock. The northern dive sites typically provide a lot of spur and groove topography with some great marine life.

If you've ever thought about diving but never taken the plunge, no problem! You can get a free scuba tryout at our dive shop. Come see for yourself why so many of our guests keep coming back year after year, anxious to explore different sites along the world's second largest barrier reef!

We offer "Valet Diving", this means you allow us to rig your gear, clean your gear, and store your gear. You simply show up and slip on your gear like a dinner jacket pre dive. Trust that you are in good hands of a 5 star PADI facility. When you arrive from the beautiful Caribbean waters we will take care of the cleaning, storing, and other details you need not be bothered with.

### **Courses:**

Scuba Try Out FREE  
Resort Course \$150  
O/W Certification \$400  
Referral \$275  
Advanced O/W \$300  
Rescue Diver \$400  
Divemaster \$1000

### **Reef-Diving:**

One-Tank Dive \$45  
Two-Tank Dive \$60  
Three-Tank Dive \$85  
Night Dives \$50  
Nitrox 32% add \$12 per tank  
Nitrox 36% add \$12 per tank

### **Special Dive Trips:**

Hol Chan & Shark Ray Alley \$75  
The Wall \$90  
Day Trip to Northern Turneffe \$150  
Day Trip to the Blue Hole \$180  
Day Trip to the Elbow \$180

### **Snorkeling:**

Hol Chan & Shark Ray Alley \$35  
Mexico Rocks \$30  
Bacalar Chico \$65s  
Night Snorkel \$50

### **Rental Equipment:**

Snorkel Set (Mask, fins & snorkel) \$8  
BCD \$8  
Regulator \$10  
Computer \$20  
Wetsuit \$8  
Sea Life Camera (Inc. 24 exp. Film) \$45



## *Journey's End Resort Dive Information*

# NORTH AMBERGRIS CAYE DIVE SITES



M&M Caverns	Caverns	70'-90'	Boat	Tiger, Gruper, Jacks
<p>This is probably one of the best dives found off the barrier reef on Ambergris Caye, located only a half mile from our Dive Center. This dive is noted for its extensive tunnels and caverns. As you descend down to a depth of 90' you see the entrance to the first tunnel, which has a length of 30' to the exit, which comes out at a depth of 60'.</p> <p>Because of the deep water surrounding these tunnels, there are always schools of horse eyejacks and a good opportunity to see deep-water pelagics cruising the reef. A dive not to be missed!</p>				



Renegades	Overhang	80'	Boat	Lobster
<p>Fish-watching at its best!! This dive site is one of the sites where the yearly grouper spawnings take place on the full moons of December and January. This means there is always a congregation of groupers and lots of other species for you to see.</p> <p>Another interesting point of this dive is the unusually large coral formation shaped like a huge mushroom, which the fish seem to use like an umbrella for shade!</p>				



Happy Hour Reef	Coral	70'	Boat	Beautiful Coral, Sponge
<p>We call it Happy Hour Reef because of the first time we went there one late afternoon, and were lucky enough to witness the spawning of the coral, which happens once a year. All year round though, you will see lots of big barrel sponges, sea fans and phenomenal colors. This is a drift dive so you can take all the time you need to explore.</p>				

# Journey's End Resort Dive Information



Eailman's Reef	Mushroom Sharp Coral	70'-80'	Boat	Gruper spawning in January
----------------	----------------------	---------	------	----------------------------

The coral at this spot is uniquely shaped like a huge mushroom under which the whole variety of reef fish of the Caribbean Sea seek protection. This is also the spot where groupers meet for spawning around December and January each year. Our manager's favorite dive site.

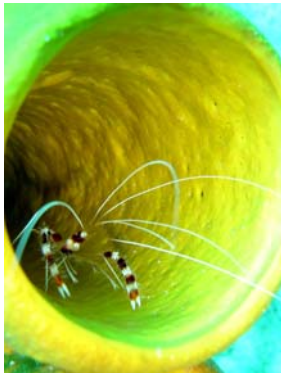
Devil's Canyon	Steep Canyon, Wall	60'-150'	Boat	Caribbean Reef Fish
----------------	--------------------	----------	------	---------------------

It's called Devil's Canyons because the canyon walls at this site drop off very steep to about 150 feet. It is impressive to dive along the side of these walls. There lots of marine life and you could literally meet any kind of fish.



Palermos Point				
----------------	--	--	--	--

You will be diving through arches carved by a slight current that comes down from Mexico catching there in the pointed reef formation. Because of this current, bigger fish such as Barracuda, stick around to hunt. Also there is a good chance of meeting big eagle rays, which feed on the micro-organisms that float in the current.



Angel's Flats		60'80'	Boat	Blk Angel, Butterfly
---------------	--	--------	------	----------------------

At this site the canyons of the reef are filled all the way up with sand, creating a great sandy flat, frequently interrupted by the coral tops of the canyons that will stick out. The reason why we call it Angel's Flats is the amazing range of artfully colored Angel and Butterfly Fish that like to meet around here. Also, you will find some Sting Rays and Nurse Sharks sleeping in the sand.



Mahogany			Boat	Tiger, Gruppers, Nassau
----------	--	--	------	-------------------------

This place is quite easy to find due to a huge mahogany tree that once got caught on the barrier reef and marks the spot. At this site the coral formation is about 20 feet higher than all along the rest of the reef, creating a little underwater hill that attracts numerous reef fish, like Tiger and Nassau Groupers, different species of Trigger Fish. There is also a big school of Blue Tang Fish that made this spot their home.

Mexico Pinnacle		70-90'	Boat	Caribbean Reef Fish, Gruper, Nurse Shark
-----------------	--	--------	------	--

Starting by diving through a cavern you will end up in front of a coral pinnacle that usually attracts groupers and nurse sharks. This size is also unique for a wall like drop off with lots of tube sponges and beautiful soft coral.

## *Journey's End Resort Dive Information*



The Wall	Sandy Slope	60'-90'	Boat	All Coral & marine Life
<p>The Wall is the most northern dive site in the country of Belize, right at the border of Mexico. It is also the only wall on the 183 miles of Belize's Main Barrier Reef. Due to the distance, we don't dive this site often, but, when we do, we get surprised all the time by the size of the fish we find here. Talking about unspoiled dive sites... <i>this is definitely the one!</i></p>				

## **SOUTH AMBERGRIS CAYE DIVE SITES**



Love Tunnels	Caverns	90'-100'	Boat	Horseye Jacks
<p>The site is named Love Tunnels simply because a pair of lovers got married in the entrance to this huge cave mouth. Combined with the beautiful and massive gorgonians and the large congregation of blue chromis, this is a beautiful dive to be added to your list.</p>				



Hol Chan	Barrier, Cut	15'-30'	Boat	Nurse Shark, Tarpon, Electric Eel, Eagle Ray
<p>Located 16 minutes away from Journey's End is one of Belize's most famous dives and also happens to be the country's first marine reserve. This dive is dense with all sorts of tropical fish... from huge dog tame groupers to moray eels and thousands of yellowtail.</p> <p>Here you can literally see most of the fish in the Caribbean. It also happens to be our night dive spot where you can see lemon sharks, eagle rays cruising at dark and all the night-time critters found on a world class dive site!</p>				



Shark Ray Alley	Sandy	8'-10'	Boat	Nurse shark, Stingray
<p>This site was highlighted in the April, 1996 issue of <i>Skin Diver</i> magazine, and is Ambergris Caye's newest attraction. You can snorkel and interact with up to 26 tame stingrays and 12-puppy dog nurse sharks. This is a once in a lifetime experience not to be missed!</p>				

## *Journey's End Resort Dive Information*



Pillar Coral		30'-70'	Boat	School Master, Barracuda
<p>Located in the Hol Chan Marine Reserve, the pillar coral dive site is a beautiful dive with lots of grouper that literally follow you throughout the dive. The name of the dive comes from the huge pillar corals found at this site and the abundant fish life that live around these coral formations.</p>				



Amigo's Wreck		70'	Boat	Nurse, Angel, Black Angel
<p>This site is just outside our beautiful coral canyons, you will end this dive at a 30-foot wreck. The wreck was purposely sunk in this spot to attract bigger marine life. It worked! Today we have big Nassau and black groupers; big hog fish snappers, nurse sharks and a couple of moray eels living in and around the wreck. This is a gorgeous dive! You have to do it while you are here with us!</p>				



Pescador Cavern	Cavern	90'-100'	Boat	Bar Jack
<p>Instead of hovering over the reef, you will explore under the reef at this site, swimming through a long tunnel. Big spinney lobsters and spider crabs like to hide in here. At the end of the tunnel, there is a steep drop off to a couple of hundred feet. You'll meet Cubero Snappers who come up out of the deep to hunt here during surface interval.</p>				



Eagle Ray Canyon	Canyons	70'-90'	Boat	Eagle Ray, Yellowtail
<p>This site is just outside the Hol Chan Marine Park Channel and due to tidal current; we keep meeting schools of spotted eagle rays. Huge barrel sponges and a variety of big groupers accentuate the reef itself. Snappers like to hang out in-between everything.</p>				

# *Journey's End Resort Dive Information*



Cypress	Finger Canyons	50'-70'	Boat	Cleaning Station
---------	----------------	---------	------	------------------

Unique to this site is the concentration of impressive orange and white elk horn corl. Schools of yellowtail, gray, black and red snappers swim among these beautiful coral formations. Because they are accustomed to being fed, they will come up very close to you. Cypress is a great spot for photographers who want to fill their wide-angle lens with colorful schools of fish.



N. Caye Caulker Cut	Coral, Patches	60'-90'	Boat	Big School Snappers
---------------------	----------------	---------	------	---------------------

This is the southern most dive site on the main barrier reef that we go. The cut is special because manatee often swims there all the way from the mainland rivers to search for food. Around July, you might even see a whale shark here.



Buena Vista Point	Fingers, Groove	60'-80'	Boat	Cleaning Station
-------------------	-----------------	---------	------	------------------

Pausing over impressive finger canyons on this dive, you will see some underwater cleaning stations. At these stations, big snappers and groupers sit patiently and let the cleaning goby fish clear their mouth and gills of parasites. It is possible to get really close to the fish for pictures.

## *Journey's End Resort Dive Information*

Annie's Farm	Slope, Spurs, Grooves	50' - 130'+	Boat	Eagle Ray, Turtle
Black Beauty	Wall	50' - 130'+	Boat	Black Coral
Blue Hole	Wall, Blue Hole	130'+	Boat	Reef Shark, Manta Ray
Caye Caulker Barrier Reef	Spurs, Grooves, Caves	20'-90'	Boat	Grouper, Eagle Ray, Moray Eel
Caye Chapel Barrie Reef	Spurs, Grooves	35'-90'	Boat	Eagle Ray
Coral Forest	Cut	10'	Boat	Stingray, Barracuda
Eel Gardens	Slope	30'	Boat	
Elbow	Slope, Wall	40'-130'+	Boat	Dolphin, Reef Shark
English Caye	Slope	40'-80'	Boat	Grouper, Moray Eel
Glover's Reef	Barrier, Cut	15'-30'	Boat	Eagle Ray
Ice Cream Cone	Spurs, Grooves	50'-13'+	Boat	Eagle Ray
Lighthouse Reed	Wall	30'-130'+	Boat	Eagle Ray
Little Finger	Spurs, Grooves	50'-13'-'	Boat	Eagle Ray
Mackeral Hole	Spurs, Grooves	50'-13'-'	Boat	Mackeral
Mata	Barrier, Cut	10'-20'	Boat	Caribbean Reef Fish
Mexico Rocks	Patch	10'-15'	Boat	
Morgan's Reef	Barrier, Caves, Canyons	50'-130'+	Boat	Eagle Ray
Permits Paradise	Barrier	30'-5'-'	Boat	Eagle Ray, Jewfish
Peter's Peak	Wall, Slope	60'-13'+	Boat	Reef Shark, Dolphin
San Pedro Cut	Barrier, Cut	30'-50'	Boat	Jewfish, Nurse Shark, Eagle Ray